

LIMOUSINE

🇬🇧 CATALOGUE 2017



TOP 5...

CALVING EASE	
DAMONA	118
GRENACHE	115
DIMOWII	110
ARMORIC	108
EREBOS	107

MUSCULAR DEVELOPMENT	
MAS DU CLO	125
EWEK	116
CAMEOS	115
ESA	114
BUSHIDO	112

FERTILITY	
VIVA VOCE	126
EDAKKYA	119
ARMORIC	116
MOZART	114
FRASCATI	110

CALVING ABILITIES	
URVILLE	119
FUMAROLI	114
NEOPHIN	113
EREBOS	112
UT MAJEUR	112

MILK PRODUCTION	
DAY	120
PATOCLE	116
DAHAIR	114
FRASCATI	114
USSE	114

CONTACT

EVOLUTION International

69 Rue de la Motte Brûlon
CS 80644
35706 RENNES CEDEX 7 - France

+ 33 (0)2 99 85 21 40

international@evolution-xy.fr

©Pictures:
EVOLUTION - GEJP, France Limousin Testage,
G. SOLDI, Mike Van Breda, CREALIM

CALVING EASE

IFNAIS Calving Ease

MATERNAL QUALITIES

CRqms	Growth
DMqms	Muscular Development
DSqms	Skeletal Development
#MOCRqms	Type Growth
PRECqms	Early Sexual Development
IFERqms	Fertility
IVELqms	Calving Ability
IMERqms	Incidence Dam At Weaning
PLAITqms	Milk Production
IQM	Maternal Qualities

BEEF ABILITIES

CRjbs/vbs	Growth
DMjbs/vbs	Muscular Development
DSjbs	Skeletal Development
PCARjbs/vbs	Carcass Weight
RDJTjbs/vbs	Killing-Out Rate
CONFjbs/vbs	Conformation
GRASjbs/vbs	Fat
IABjbs/vbs	Beef abilities
ICRCjbf/vbf	Carcass growth
CONFjbf/vbf	Carcass conformation
IABjbf/vbf	Total merit for beef abilities
IAB€	Economic proof for beef abilities

IBOVAL

CRsev	Growth
DMsev	Muscular Development
DSsev	Skeletal Development
ISEVR	Weaning Proofs
AVel	Calving Ability
ALait	Suckling Ability
IVMAT	Total merit for maternal qualities

- New bull
- Female sexed semen
- Male sexed semen
- Super calving ease
- Outcross pedigree
- Super docility
- Genomic proofs



◀ HELP TAB TO READ THE PROOFS



EVOLUTION International is the leading French exporter of cattle genetics, a supplier of genetic advance for more than 50 years. With its network of partner distributors covering more than 70 countries, EVOLUTION International aims to be one of the top 5 exporters of animal genetics in the world.

YOUR PARTNER FOR:

DAIRY, BEEF AND BIOTECHNOLOGIES

TECHNICAL SUPPORT

To advise you, ensuring you have the best genetic advance

All of the technical experts of EVOLUTION International and our partners (Breed Selection Enterprises) are here to advise you, to provide you with the genetics that are the most suited to your needs in cattle and goat breeding.

GENETICS / GENOMICS

Successful breeding programmes at the service of livestock farming

EVOLUTION International offers you the best of genetics for:

- ▷ Dairy or dual purpose cattle breeds : Holstein, Normand, Pie Rouge, Brown Swiss
- ▷ Large format suckler breeds: Limousin, Charolais, Blond d'Aquitaine
- ▷ Hardy breeds: Aubrac, Salers, Gasconne, Tarentaise, Abondance
- ▷ Specialised breeds : Rouge des Prés (Maine-Anjou), Parthenais, Bazadais
- ▷ Breeds for crossing: Blondcross, Limoucross, INRA 95 and Charolais Excellence
- ▷ Goat breeds : Saanen and Alpine

EMBRYOS

Genetic advance in fast motion

To ensure maximum genetic advance, EVOLUTION International brings you a wide range of embryos that covers all their dairy and beef breeds.

Out of dams with confirmed potential and the best bulls, these embryos will be the guarantee of success for your herds.

www.evolution-int.com



YOUR PARTNER FOR : DAIRY, BEEF AND BIOTECHNOLOGIES

OUR RANGE OF BREEDS



SEMEN | EMBRYOS | GENOMIC TESTING | MONITORING

www.evolution-int.com

CONTENTS

MATERNAL QUALITIES

EFFICIENCY

FRASCATI	9
FUMAROLI	9
EREBOS	10
EDAKKYA	10
GSTAAD	11
GRENACHE	11
DAHAIIR	12
CAMEOS	12
VALERIAN	13
DAY	13

TYPE

ESA	14
DIXEDER	14
CHATELAIN	15
BEL ORIENT	15
GINSENG	16
DIEUNORDIC	16
GIVAY	17
CABOTEUR	17

GENOMIC BULLS

ICCULOC	20
INDIANHILL	21
IX	21

POLLED

JENSUIS PP	23
GUERET PO	23
HYWEN PO	24
GUNADARKPO	24

LEGEND

NEW	New bull	Super docility
SF	Female sexed semen	Outcross pedigree
SM	Male sexed semen	Super calving ease
G	Genomic proofs	

CROSSING

FOR DAIRY

HORN	26
HEPHAISTOS	26
IRONDA MH	26
HAMILCAR	26
GIMLI	27
FAVARS	27

HEAVY GROWTH

FABLE	28
EPIDAURE	28
FJORD	28
FRICFRAC	28

MATERNAL CROSS

EWEK	29
DIOMIWI	29
DAMONA	29
FEST NOZ	29

PEDIGREE RANGE

GAGNEUR MN	33
ATLAS MN	33
GORILLE MN	34
GABIN MN	34

INDEX

MATERNAL QUALITIES	P18
POLLED	P22
CROSSING	P27
PEDIGREE RANGE	P30

MATERNAL QUALITIES

The **Maternal Qualities** range brings together the bulls that have undergone a progeny test to assess their maternal and beefing abilities. According to profiles, you will find the bulls in the segments:

- **Efficiency:** corresponds to breeders who are looking for replacement females with excellent maternal qualities, synonymous of profitability.
- **Type:** for breeders who are seeking to bring morphology to their herd.

GENOMICS BULLS

These bulls have gone straight to catalogue but already have new genomic selection values. The range offers a big opportunity for your farm—recent-generation bulls, with new or proven pedigree and very high potential.

POLLED RANGE

This **Polled** range is the result of several years of the introduction of the polled gene into our breeding programmes. Our intention is to combine animal wellbeing with better working conditions for livestock farmers, and at the same time keeping technical performances equivalent to horned bulls.

This range is extended year by year to offer you a wider selection of easy-to-use polled bulls (heterozygous).

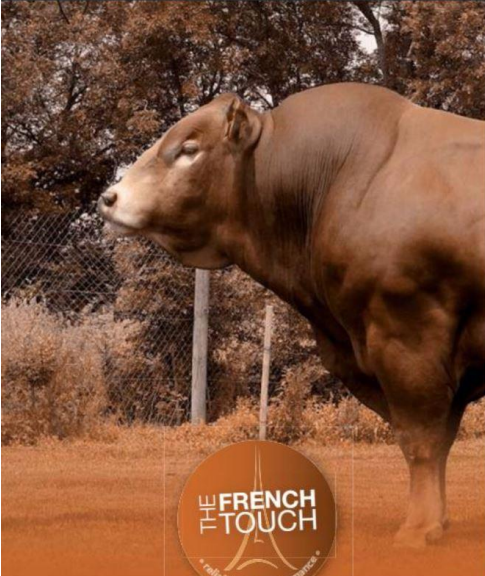
CROSSING RANGE

The **Crossing** range is intended for breeders interested in crossbreeding. It is the answer to a variety of needs:

- **For dairy:** for breeders who are looking for animals with early muscularity and growth, from the first weeks of life of the calf. Ideal for both dairy and suckler herds, ready for slaughter at less than 12 months.
- **Heavy growth:** for breeders who are looking for growth, weight and carcass yield. Ideal for both dairy and beef herds, with slaughter before 12 months of age.
- **Maternal Cross:** for breeders who want to improve the overall performances of their herd by producing crossbred females. Ideal for 1st generation and absorption crossing.

PEDIGREE RANGE

The sires of the **Pedigree** range come from families recognized as being great bloodlines in the breed. They stand out by their remarkable morphology observed on important shows or through their progeny.



EXCELLENCE

The best genetics in the world

RELIABILITY

Animals with proven and reliable potential

DIVERSITY

A range of different bulls which satisfy all expectations

THE FRENCH LIMOUSIN...

LIMOUSIN BREED SELECTION IN FRANCE

- > The most reliable breeding programme in the world
- > 153.000 dams in performance testing
- > Progeny testing on each sire distributed

A UNIQUE BREEDING PROGRAMME

Selection pressure taken to extreme lengths to achieve excellence :



We are the only ones to do it!
No bull is distributed unless his progeny has been tested on station.

With the on-station testing, the environmental effects are controlled. What is measured is the real genetic potential of our sires.

PROOFS LEGEND

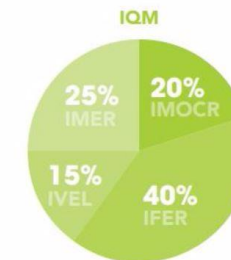
CALVING EASE

IFNAIS Calving Ease



MATERNAL QUALITIES

CRqms	Growth
DMqms	Muscular Development
DSqms	Skeletal Development
IMOCRqms	Type Growth
PRECqms	Early Sexual Development
IFERqms	Fertility
IVELqms	Calving Ability
IMERqms	Incidence Dam At Weaning
PLAITqms	Milk Production
IQM	Maternal Qualities



BEEF ABILITIES

CRjbs/vbs	Growth w
DMjbs/vbs	Muscular Development
DSjbs	Skeletal Development
PCARjbs/ vbs	Carcass Weight
RDTjbs /vbs	Killing-Out Rate
CONFjbs /vbs	Conformation
GRASjbs / vbs	Fat
IABjbs/ vbs	Beef abilities
ICRCjbf /vbf	Carcass growth
CONFjbf /vbf	Carcass conformation
IABjbf /vbf	Total merit for beef abilities
IAB€	Economic proof for beef abilities



IBOVAL

CRsev	Growth
DMsev	Muscular Development
DSsev	Skeletal Development
ISEVR	Weaning Proofs
AVel	Calving Ability
ALait	Suckling Ability
IVMAT	Total merit for maternal qualities





MATERNAL QUALITIES

The Maternal Qualities range brings together the bulls that have undergone a progeny test to assess their maternal and beefing abilities.

According to profiles, you will find the bulls in the segments:

- **Efficiency:** corresponds to breeders who are looking for replacement females with excellent maternal qualities, the synonym of profitability.
- **Type:** for breeders who are seeking to bring morphology to their herd.



TASTEVIN X TRIOMPHE FR1934047978 23/10/2010 EARL VERDIER ET FILS

FRASCATI

THE WINNING FUTURE

- Delivers all-round on Maternal qualities
- Fertility, Calving ability, Milk production
- very docile progeny

IFNAIS
95

IFERqms
110

WELqms
111

PLATqms
114



URVILLE X IONESCO FR2219275162 15/08/2010 GAEC DU BREUIL ST MAURICE

FUMAROLI

SHIFT TO MEAT AND FARMABILITY

- produces thick and meaty animals
- milky females
- outstanding calving ability

IFNAIS
92

WELqms
114

PLATqms
110

IQM
110



IFNAIS
107

IVELams
112

PLAITqms
105

ISEVR
113



URVILLE X IONESCO FR1210076217 16/09/2009 M BELLOC ALAIN

EREBOS

CALVING GUARANTEE

- Excellent calving ability
- Very good growth before weaning
- Females with good milk production



IFNAIS
100

CRsev
124

DMsev
117

ISEVR
128



USSE X SAFARA FR1212012807 08/10/2011 M CHASSANG RENE

GSTAAD

VOLUME AND MEAT

- Remarkable growth potential
- Young bulls with good rounded quarters
- Docile cows with lots of promise



IFNAIS
99

IFERams
119

IVELams
105

PLAITqms
109



ALEX X URGEL MN FR2350854301 24/08/2009 GAEC CHANTON

EDAKKYA

DIFFERENT AND ESSENTIAL

- Outstanding maternal qualities: Fertility, Calving, and Milk production
- Females with a balanced morphology
- Very easy to use



IFNAIS
115

ALait
113

IVMAT
106

CONFbit
105



TASTEVIN X AMIRAL FR1935141686 03/11/2011 M SOFIMA (MR CALDEMAISON)

GRENACHE

THE NEW FACE OF CALVING EASE

- Off-the-charts calving ease IFnaiss = 115
- a family with huge growth potential
- Females being on-station-tested for maternal qualities



IFNAIS
100

PLATqms
114

IQM
107

CRsev
110



SAFARA X IDEAL FR1932992030 09/09/2008 M TRASSOUDAIN BERNARD

DAHAIR

PEACE OF MIND

- Good calving ease
- Females with good milk production
- Very good pelvis



IFNAIS
101

PLATqms
107

ISEVR
108

IVMAT
119



MERIDIEN X IDEAL FR4145044764 14/10/2004

VALERIAN

BALANCE MORPHOLOGY/ PRODUCTION

- Very good milk production
- Good combination between calving ease, muscle, and milk
- Easy to use



IFNAIS
97

PLATqms
113

IQM
113

ISEVR
131



REMIX X MAS DU CLO FR2424507604 22/09/2007 AUTR LYCEE AGRICOLE

CAMEOS

MEAT BUT NOT ONLY

- Combination of muscular potential and milk
- Very good conformation
- Animals with a high potential for growth



IFNAIS
84

IFERams
107

PLATqms
120

IQM
113



ALF X OUF FR1932945444 25/10/2008 GAEC CHRISTIAN ET VINCENT BESSE

DAY

UNBEATABLE

- An outcross pedigree
- Complete females on all maternal qualities traits
- Calves with very good growth at weaning



IFNAIS
89

IMOCReqms
138

IFEReqms
105

IQM
115



MANOIR MN X TAN FR4940351045 10/08/2009 EARL DRU OLIVIER

ESA

EXCELLENT FOR VOLUME

- Heavy females with volume
- Good fertility
- An original bloodline



IFNAIS
98

IFEReqms
109

PLAITqms
107

IABibf
121

ON DIT X NEUE FR1208099630 17/09/2007 GAEC -COMBELLES D'ISTOURNET

CHATELAIN

GENEROUSLY TOP CLASS

- Volume and length
- Fertile and good milk-producing females
- A solid genetic combination



IFNAIS
105

IMOCReqms
114

IABibf
123

CRsev
114

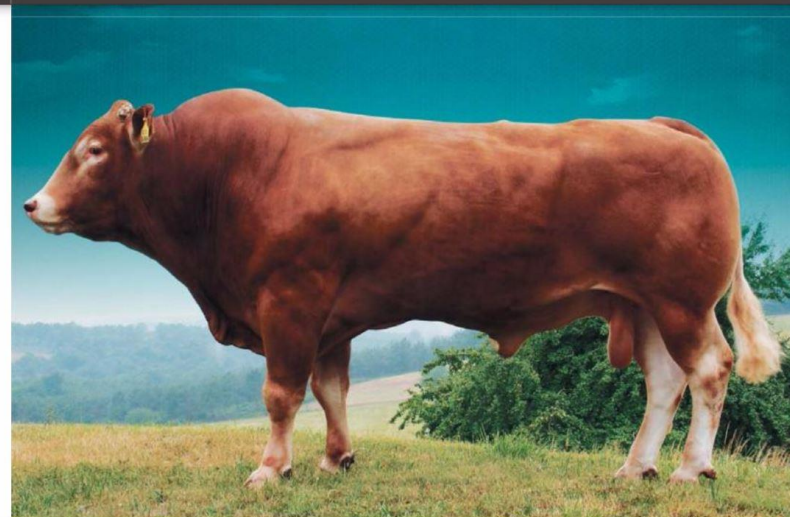


ATOUT X PAPILLON FR0313289303 04/09/2008 GAEC ROUSSET

DIXEDER

A NEW MORPHOLOGICAL ADVANTAGE

- Excellent calving ease
- Very good skeletal development
- Heavy and deep-bodied animals



IFNAIS
97

IFEReqms
105

IWEqms
104

PLAITqms
107

NEUF X DAUPHIN FR2424526210 14/09/2006 M HILAIRE ELISE

BEL ORIENT

EFFECTIVE AND CLASSY

- Widely used for his breeding qualities
- Very complete Milk, fertility, and calving ability
- Very good pelvis





IFNAIS
89

IABibf
117

CRsev
118

DSsev
116



TONIC X UNIVERSEL FR8742551995 28/09/2011 GAEC DECONCHAT FAURE

GINSENG

OUTCROSSABILITY

- Adds skeletal development
- great growth potential before and after weaning
- Easy-to-use pedigree



IFNAIS
92

CRsev
116

DMsev
114

ISEVR
118



ON DIT X REMIX FR1212010101 03/09/2011 GAEC DE CANCERLES

GIVAY

THE MATERNAL QUALITIES PACKAGE

- Elegant and well-developed females
- Huge growth potential
- Young bulls with good conformation



IFNAIS
92

IFERqms
114

IABibf
127

DMsev
133



ARMORIC X HIGHLANDER FR2219275014 19/08/2008 GAEC DU BREUIL ST MAURICE

DIEUNORDIC

SIMPLY HIGH-PERFORMANCE

- Beefy mixed type morphology
- Good fertility
- Very good growth potential



IFNAIS
97

IFERqms
117

IWEqms
105

DSsev
116



TRIMARAN X LORIOT.MN FR2307284915 14/04/2007 GAEC MALABRE

CABOTEUR

THE BEST CHOICE FOR MORPHOLOGY

- Very good calving ability
- Excellent fertility of the daughters
- Well-developed animals with a good growth potential

Number	Bull	Sire	Grand-Sire	CALVING EASE										MATERNAL QUALITIES										BEEF ABILITIES										IBOVAL					
				IFNAIS	CD	CRqms	DMqms	DSqms	IMOCR	IFER	PREC	IVEL	IMER	PLAIT	IOM	CR jbs	DM jbs	PC jbs	RDT jbs	CONF jbs	GRAS jbs	IAB jbs	ICRC jbf	CONF jbf	IAB jbf	IAB jbf €	CR sev	DM sev	DS sev	ISEVR	CD ISEVR	AVel	ALAIT	IVMAT	CD IVMAT				
MATERNAL QUALITIES RANGE EFFICIENCY																																							
FR2219279723	ARMORIC	NEUF	MAS DU CLO	108	0.99	109	105	111	112	116	109	104	91	98	107	86	107	90	113	111	98	101	99	121	108	26 €	99	122	97	117	0.99	57	99	110	0.85				
FR1932014117	AZURRI	POSEIDON	JAZZ	97	0.99	109	103	107	110	110	101	104	96	102	107	100	103	102	110	105	101	103	118	118	123	72 €	111	124	98	122	0.99	67	107	126	0.89				
FR2257773618	BAVARDAGE **	ON DIT	DAUPHIN	98	0.99	104	101	114	108	93	99	113	108	116	111	106	108	111	116	112	105	111	134	121	138	118 €	108	115	113	116	0.99	80	117	129	0.92				
FR2424526210	BEL ORIENT	NEUF	DAUPHIN	97	0.99	94	91	101	92	104	110	103	101	107	99	106	100	106	103	107	95	107	119	108	119	59 €	109	114	108	116	0.98	98	100	114	0.76				
FR1207086041	BUSHIDO	REMIX	MAS DU CLO	90	0.97	103	112	102	109	93	99	109	99	101	105	96	91	96	101	96	102	96	107	105	108	24 €	103	113	98	106				0.92					
FR2424507604	CAMEOS	REMIX	MAS DU CLO	97	0.99	110	115	100	114	93	96	105	111	113	113	108	120	110	105	120	89	116	117	119	122	69 €	112	138	96	131	0.99	108							
SP	FR1932992030	DAHAI	SAFARA	IDEAL	100	0.99	104	95	111	104	99	105	94	112	114	107										110	105	109	111	0.96	104								
FR1932945444	DAY	ALF	OUF	84	0.99	94	106	97	98	107	97	102	119	120	113											109	123	99	114	0.97									
FR2350854301	EDAKKYA	ALEX	URGEL MN	99	0.91	102	100	95	100	119	105	105	102	109	108											102	100	92	99	0.78									
FR1210076217	EREBOS	URVILLE	IONESCO	107	0.97	97	101	93	96	97	97	112	105	105	104											108	107	98	113	0.90									
FR2219114322	EWEK	CAPRICIEUX	TOI ROI	93	0.96	93	116	85	99	105	98	93	106	101	102											106	121	97	115	0.88									
FR1211125433	FOLETON	VENT D'OC	HIGHLANDER	98	0.44	104	103	111	108	106	98	100	98	99	105											106	92	111	92	0.77									
SP	FR1934047978	FRASCATI	TASTEVIN	TRIOMPHE	95	0.91	103	91	102	98	110	98	111	112	114	112										98	100	96	95	0.82									
SP	FR2219275162	FUMAROLI	URVILLE	IONESCO	92	0.90	105	105	87	102	100	101	114	108	110	110										98	116	95	105	0.80									
NEW	FR7121642263	GATTACA	URVILLE	ON DIT	98	0.91																			104	97	99	100	0.83										
NEW	FR1934921406	GENGISKHAN	ANECDOTE	OZEUS	108	0.90																				102	99	97	104	0.81									
NEW	FR1935141686	GRENACHE	TASTEVIN	AMIRAL	115	0.92																				91	99	83	98	0.84									
NEW	FR1212012807	GSTAAD	USSE	SAFARA	100	0.93																				124	117	100	128	0.85									
FR2396032213	MAS DU CLO	BAMBINO	TILLEUL	83	0.99	114	125	103	123	91	96	93	103	101	109	96	118	99	112	116	100	108	103	118	110	32 €	109	131	98	118	0.99	91	93	113	0.99				
FR1519127770	OZEUS	IDOLE	ULEX	104	0.99	94	103	98	97	92	97	100	104	105	98	91	99	96	114	96	96	97	109	104	110	30 €	100	109	98	107	0.99	101	106	112	0.98				
FR1931859212	URVILLE	SCAPIN	DOMINO	95	0.99	99	103	87	97	102	102	119	108	111	109	108	109	109	105	106	97	108	113	104	113	39 €	111	118	102	117	0.99	105	99	117	0.98				
FR2303293868	USSE	POPEYE	FIGUIER	102	0.99	97	93	98	94	89	93	96	115	114	101	103	98	107	112	112	110	108	115	110	117	53 €	106	106	97	109	0.99	78	115	121	0.97				
FR4145044764	VALERIAN	MERIDIEN	IDEAL	101	0.99	103	96	103	101	91	93	85	119	107	104	102	103	103	104	102	113	102	99	108	103	9 €	103	110	94	108	0.99	69	113	119	0.94				
FR8753490638	VIVA VOCE	MOZART	LAFRITE	100	0.99	108	107	100	109	126	108	99	98	96	111	102	112	103	103	112	98	108	111	111	114	42 €	101	108	94	105	0.96	86	105	108	0.79				
MATERNAL QUALITIES RANGE TYPE																																							
FR2307264005	BEAUPRE	REMIX	ROTIN	90	0.98	100	90	104	96	100	99	107	101	104	101	110	92	109	99	100	97	105	120	103	118	56 €	108	110	118	110	0.95	117							
FR2307284915	CABOTEUR	TRIMARAN	LORIOT MN	97	0.98	100	92	106	98	117	104	105	86	88	98	114	105	115	102	102	100	109	112	97	109	27 €	108	97	116	105	0.97	106	99	104	0.79				
FR1208099630	CHATELAIN	ON DIT	NEUF	98	0.99	103	94	111	102	109	101	100	98	107	103	108	97	112	111	103	115	106	119	113	121	66 €	114	114	112	120	0.98	101							
FR0313289303	DIXDER	ATOUT	PAPILLON	105	0.99	114	102	111	114	96	98	101	81	80	96												125	106	123	72 €	114	100	106	113	0.98	94			
FR2219275014	DIEUNORDIC	ARMORIC	HIGHLANDER	92	0.99	107	110	100	110	114	100	100	88	86	103												120	123	127	84 €	119	133	109	132	0.98	84			
FR1989009820	ELEAZAR	BILBAO	ORDINAIRE	98	0.99	105	83	109	98	112	100	108	95	92	102	111	95	110	95	105	112	106	107	98	105	15 €	106	90	105	97	0.99	118	101	100	0.99				
FR4940351045	ESA	MANOIR MN	TAN	89	0.97	136	114	123	138	105	107	98	89	97	115												113	111	112	113	0.92								
NEW	FR8742551995	GINSENG	TONIC	UNIVERSEL	89	0.90																					120	100	52 €	118	100	116	109	0.81					
NEW	FR1212010101	GIVAY	ON DIT	REMIX	92	0.93																					120	115	73 €	116	114	108	118	0.86					
FR8796002929	MERIDIEN	ESOPE	URANOS	90	0.99	99	94	103	97	91	95	83	114	99	98	101	90	102	104	98	96	100	103	104	104	13 €	110	101	106	104	0.99	99	91	98	0.98				
FR1205098551	VULPIAN	NEUF	DAUPHIN	106	0.99	103	91	115	103	102	107	100	100	103	102	99	98	100	104	94	98	97	111	110	114	43 €	101	97	107	103	0.99	86	107	106	0.91				
GENOMIC BULLS																																							
NEW	FR1214018426	ICCULOC	COLUCHE	ARTISTE	103	0.59																																	
NEW	FR1214014324	INDIANHILL	NEVADA	PARADIS	99	0.57																																	
NEW	FR1937361674	IX	BAVARDAGE	NEUF	95	0.59																																	

* Limited availability ** Very limited availability XXX : Genomic proofs



GENOMICS RANGE

These bulls have gone straight to catalogue but already have new genomic selection values. The range offers a big opportunity for your farm— recent-generation bulls, with new or proven pedigree and very high potential.



IFNAIS
99

CRsev
113

DSsev
111

IVMAT
116



NEVADA X PARADIS

FR1214014324

03/12/2013

GAEC BELARD

INDIANHILL

INNOVATIVE NEW PEDIGREE

- Guaranteed to bring growth potential
- Volume first
- 105 on suckling ability



IFNAIS
103

CRsev
107

Alair
110

IVMAT
118



COLUCHE X ARTISTE

FR1214018426

09/11/2013

M CHASSANG RENE

ICCULOC

FRESH NEW GENOMICS

- Pedigree instantly recognizable on-farm
- Bull with a good pelvis
- Good milk potential



IFNAIS
95

DMsev
115

Alair
108

IVMAT
119



BAVARDAGE X NEUF

FR1937361674

17/09/2013

GAEC TERRASSON

IX

THE FIRST SON OF BAVARDAGE ON CATALOGUE

- Solid pedigree on maternal qualities
- Guaranteed to bring good growth potential
- Heavy bullocks with good conformation



POLLED RANGE

This **Polled** range is the result of several years of the introduction of the polled gene into our breeding program. Our intention is to combine animal wellbeing with better working conditions for livestock farmers, and at the same time keeping technical performances equivalent to horned bulls.

This range is extended year by year to offer you a wider selection of easy-to-use polled bulls (heterozygous).

Number	Bull	Sire	Grand-Sire	CALVING EASE				BEEF ABILITIES				IBOVAL						
				IFNAIS	CD	ICRC jst	CONF jst	IAB jst	IAB jst &	CRsev	DMsev	DSsev	ISEVR	CD ISEVR	AWI	ALAIT	MMAT	CD MMAT
FR1212008733	GUERET PO	MATEO	ON DIT	87	0,96					118	122	101	121	0,89				
FR1532190769	GUNADARK-PO **	REMIX	OZEUS	104	0,97					103	99	104	104	0,88				
FR4312002813	HYWEN PO	CIAO PO	VITRUVÉ	90	0,69	106	104			102	98	95	95	0,56	NP	NP	93	0,41
FR1215150355	JENSUIS PP	GUNA-DARKPO	CYAN PO	108	0,58	113				111	112	99	118	0,51	NP	NP	120	0,39



- IFNAIS 108
- CRsev 111
- DMsev 112
- MMAT 120



GUNADARK PO X CYAN PO FR1215150355 14/11/2014 GAEC -COMBELLES D'ISTOURNET

JENSUIS PP

100% POLLED CREALIM

- 1st homozygous polled bull
- sexy genomic indexes
- Good calving ease potential expected from his pedigree and his genomic evaluation



- IFNAIS 87
- CRsev 118
- DMsev 122
- ISEVR 121



MATEO X ON DIT FR1212008733 12/09/2011 GAEC ROUCHES

GUERET PO

VOLUME AND GROWTH

- High potential for growth
- Wide pelvis
- Good muscular development



CIAO PO X VITRUVÉ FR4312002813 26/09/2012 GAEC LIMOUSIN DU GARAY

HYWEN PO

THE POLLED OPTION

- His dam scored 113 in IVMAT
- Beefy-mixed type
- Heterozygous polled bull



REMIX X OZEUS FR1532190769 06/11/2011 GAEC DU PUY DE L'ARBRE

GUNADARK PO

PREPARE FOR THE FUTURE

- The French star of polled cattle
- Solid pedigree for maternal qualities
- Calves with a low birthweight



CROSSING RANGE

The Crossing range is intended for breeders interested in crossbreeding. It is the answer to a variety of needs:

- For dairy: for breeders who are looking for animals with early muscularity and growth, from the first weeks of life of the calf. Ideal for both dairy and suckler herds, ready for slaughter at less than 12 months.
- Heavy growth: for breeders who are looking for growth, weight and carcass yield. Ideal for both dairy and beef herds, with slaughter before 12 months of age.
- Maternal Cross: for breeders who want to improve the overall performances of their herd by producing crossbred females. Ideal for 1st generation and absorption crossing.



HORN

GROWTH AND CONFORMATION COMBINED

- Produces heavy and thick animals
- Great calf and carcass conformation
- Good calving ease



USTED X REMIX FR4813018864 11/09/2012

GAEC COUFFINET



GIMLI

THE WINNING MIX

- Very good calving ease
- To use on dairy cows
- Good calves and carcass conformation



USKUDAR X PAX FR4311993146 15/07/2011

M TOURETTE PIERRE



HEPHAISTOS

OUTSTANDING HINDQUARTERS

- Series-leading conformation
- Calves with great topline and hindquarters
- Good economic returns



BRAISE X MAS DU CLO FR4312003813 14/09/2012

M MICHEL JULIEN



FAVARS

CALVING SAFETY

- Animals with good conformation and fine bones
- Very good fat level
- Excellent calving ease



CHARMEUR X RUBIS MIN FR1934109355 06/10/2010

M.ME ORVAIN ANNICK ET J-MARC



IRONDA MH

THE DOUBLE-MUSCLED

- Homozygous MH carrier
- Brings conformation
- Brings growth potential



GASTON X ULTRACHIC FR1936204801 24/03/2013



HAMILCAR

THE NEW CROSSBREEDING ASSET

- Exceptional calving ease
- Very good carcass conformation
- Heterozygous carrier of the double-muscle gene



AMILCAR X IONESCO FR1212010241 06/02/2012

GAEC DE CANCERLES



Number	Bull	Sire	Grand-Sire	CALVING EASE										BEEF ABILITIES										IBOVAL									
				IFNAIS	CD	CR vbs	DM vbs	PC vbs	ROT vbs	CONF vbs	GRAS vbs	IAB vbs	ICRC vbf	CONF vbf	IAB vbf	CR SEV	DM SEV	DS SEV	ISEVR	CD ISEVR	AVEL	ALAT	MMAT	CD MMAT									
FOR DAIRY																																	
FR1932301351	ALDEBARAN	MAS DU CLO	ORME	100	0.52	96	100	94	93	102	102	101	101	118	113	52	€																
FR1932349268	ARIAL	POETIX	IDEAL	107	0.95	100	110	99	98	117	115	105	118	132	126	101	€	91	127	73	111	0.76											
FR19322727915	BRAISE	TISON	GENIAL	100	0.97	107	112	106	98	111	108	106	110	122	118	69	€	85	123	68	101	0.87											
FR1932592744	BRANCEILLE	OBJAT	SYLVESTRE	110	0.98	112	108	113	103	105	108	103	114	113	114	52	€	113	129	91	131	0.92	89										
FR1932967173	CHAUMEIL **	OBJAT	IONESCO	122	0.99	108	104	112	109	99	96	100	126	120	127	102	€	95	135	76	127	0.97											
FR1932749881	CORREZE	OBJAT	ROMEO	107	0.98	98	107	103	114	100	88	100	111	111	113	49	€	102	140	82	128	0.91											
FR1932967249	DONZENAC	OBJAT	MAS DU CLO	105	0.96	110	105	113	110	106	102	105	114	119	122	84	€	108	143	80	134	0.79											
FR1933470099	ECLA	VITELO	POETIX	103	0.48	107	105	106	97	104	97	104	120	115	122	85	€																
FR2424540110	ELSTAR	USKUDAR	LOUXOR	95	0.57	95	108	95	93	102	88	100	111	118	121	82	€																
FR1933413375	EUPHRATE	USKUDAR	JAGUAR	99	0.98	113	119	117	111	119	112	112	130	137	141	€	94	131	82	114	0.94												
FR7947260566	EVADAM	VATICAN	FR8790012995	97	0.53	101	108	99	95	109	96	103	112	117	122	84	€	105	124	88	113	0.76											
FR1934109355	FAVARS	CHARMEUR	RUBIS MIN	111	0.97	98	115	103	114	112	114	104	98	117	114	52	€	91	128	62	112	0.83											
FR4811035863	FENRIR	USKUDAR	IONESCO	95	0.55	114	113	115	100	111	108	109	109	117	121	80	€																
FR1934279091	FOGUET	CHARMEUR	R 0049	101	0.55	107	109	107	102	105	99	104	97	108	107	26	€																
FR1934169404	FORGES	VOLLEY	FR8778002862	104	0.51	97	98	94	94	100	100	98	94	103	101	6	€																
FR4311993146	GIMLI	USKUDAR	PAX	107	0.53	103	117	104	102	106	113	105	121	123	128	109	€																
FR1212010241	HAMILCAR	AMILCAR	IONESCO	118	0.56	94	113	92	91	112	110	102	109	126	125	97	€																
FR1936204801	IRONDA MH	GASTON	ULTRACHIC	96	0.63								114	113	115																		
FR4813018864	HORN	USTED	REMX	107	0.58								117	114	116	62	€																
FR4312003813	HEPHAISTOS	BRAISE	MAS DU CLO	103	0.59								103	119	113	50	€																
FR1934900096	HUSSAC	ECLAIR	MIMOSA	101	0.50	110	108	110	106	109	110	109	138	130	142	163	€																
FR1930599372	ROCKSTAR	L 79	FR1901417639	105	0.98	90	97	108	96	102	96	85	103	94	-24	€	94	130	74	115	0.96	107	96	109	0.77								
FR1202074104	SALVETAT	MEYMAC	HIBISCLUS	98	0.51	105	104	107	105	101	94	102	113	117	117	66	€																
FR1931147518	SESAME	MAS DU CLO	GENIAL	95	0.52	115	106	109	84	106	114	107	114	115	118	71	€																
FR1931361363	SUC AU MAY *	CHARMEUR	GENIAL	120	0.99	104	94	106	105	99	109	99	105	111	110	39	€	92	118	73	112	0.96	88	94	102	0.74							
FR1202088259	TEHIX	MAS DU CLO	ESPOIR	96	0.98	122	110	119	93	111	112	110	119	117	119	74	€	103	135	84	121	0.95	101	91	112	0.82							
FR1931761846	UNCLOS	MAS DU CLO	DAUPHIN	99	0.59	108	100	108	99	98	104	101	109	114	110	40	€																
FR1204079004	UNOS *	PAX	CHARMEUR	106	0.56	82	96	88	114	103	89	98	96	112	107	26	€																
FR2424663701	UPAX *	PAX	CHARMEUR	102	0.55	105	106	107	107	101	107	101	111	108	108	30	€																
FR1931412178	USKUDAR	MAS DU CLO	FR1994007314	96	0.99	120	120	121	102	119	110	114	128	127	132	124	€	104	143	82	127	0.97	104	87	114	0.85							

* Limited availability ** Very limited availability



FABLE

THE BEST CALVING EASE ON OFFER

- Young bulls with good conformation
- Risk-free crossbreeding
- comes with matching pedigree



ON DIT X MAS DU CLO FR1211177873 01/09/2010 M LAGARDE CHRISTIAN



EWEK

THE OTHER DIFFERENCE

- Very fertile females
- Very good muscle development
- Very easy to use



CAPRICIEUX X TOI ROI FR2219114322 15/10/2009 M GOATER



FJORD

THICK AND HEAVY CARCASS

- outstanding post-weaning and feedlot growth
- outstanding carcass conformation
- added value for feeders



OZEUS X RIA FR1211125402 05/09/2010 GAEC -COMBELLES D'ISTOURNET-



DIMOIWI

FOR SAFE GROWTH

- Very good calving ease
- For mixed beefy type animals
- Fertile and high-yielding females



ON DIT X HIGHLANDER FR4949411548 02/09/2008 EARL DRU PHILIPPE



FRICFRAC

BIGGER VOLUME

- Growth straight out of weaning
- males and females with skeletal development
- original and unique pedigree



SHERIFF X NEPTUNE FR3615401624 18/10/2010 GAEC BENOIT



DAMONA

FOR YOUR HEIFERS

- Excellent calving ease
- For replacement females
- Very good milk production



NEUF X MICMAC MN FR2942852535 06/11/2008 GAEC EVEN



EPIDAURE

THE VOLUME OPTION

- Very good skeletal development
- Deep and heavy heifers
- From a bloodline with lots of volume

ROESTI X SIRTAKI JA FR0313680043 18/09/2009 GAEC ROUSSET



FEST NOZ

THE 1ST SON OF ULYS MN

- Elegant females with fine bone structure
- A sexy Pedigree
- Calves with good muscular development



ULYS MN X ELEAZAR FR5382582099 06/09/2010 M MACE JEAN-PIERRE





PEDIGREE RANGE

The sires of the **Pedigree** range come from families recognized as being great bloodlines in the breed. They stand out by their remarkable morphology observed on important shows or through their progeny.

Number	Bull	Sire	Grand-Sire	CALVING EASE				BEEF ABILITIES							IBOVAL			
				IFNAIS	CD	CRClv	CONFib	ABJb	ABJf	ABJf €	CRsev	DMsev	DSsev	ISEVR	CD ISEVR	AW	ALAT	VMAT
FR1932086811	ATLAS	NELSON	HEROS BIS	95	0.98	108	114	108	115	110	118	117	0.97	98	104	120	0.76	
FR8123136127	ACCENT MN	TARVIS	NAPOLEON	91	0.99	101	98	100	1 €	99	93	111	92	0.99	125	89	0.94	
FR1618184458	AIMABLE MN	SHOW	ELEAZAR	93	0.97				105	106	111	105	0.95	114	106	111	0.77	
FR8761410478	APACHE MN	MUGUET	ESPOIR	98	0.97	110	112	113	41 €	98	102	103	99	0.95	105	91	0.80	
FR8605125630	APPART MN *	URON	IDEAL	92	0.97	110	113	114	44 €	106	117	108	113	0.95	95	101	113	0.82
FR1932639550	BANDIT2 MN *	VALSEUR	PACHA	96	0.98	110	100	109	27 €	108	106	117	110	0.96	76	90	99	0.78
FR8753841547	BONUS MN	URUGUAY	FERRY	100	0.96				106	98	107	104	0.92	102	93	97	0.72	
FR5454765999	BRESIL MN	ULRICH	CURJACOIS	92	0.96	121	105	120	61 €	111	104	114	108	0.93	104	106	115	0.73
FR4804023224	BRIGAND MN	UBU	PAPILLON	95	0.95				112	115	110	117	0.91	92	97	113	0.67	
FR4648428979	CESARIO MN	OZEUS	IDEAL	103	0.96				102	119	95	114	0.93	96	109	120	0.69	
FR4809038032	DENBREIZMN	TREADOR	NEWYORK	104	0.94	111	108	113	40 €	109	103	110	111	0.88				
FR3615310273	EBENE MN	CACAO	NEPTUNE	99	0.93				97	135	88	119	0.86					
FR1933467695	EDDY MN	BONUS MN	VALENTIN	90	0.98	120	106	119	59 €	119	111	120	118	0.95	109		0.83	
FR2350863054	FELIX MN	BACCARA	JOUEUR	113	0.91				106	104	95	113	0.84					
FR2311217750	GABIN MN	DANDY	UDIN	97	0.91				112	107	122	114	0.84					
FR1935129507	GAGNEUR MN	EDELWEISMN	OZEUS	108	0.90				109	122	95	124	0.77					
FR1934106236	GORILLE MN ***	COMPIL	MANOIR MN	89	0.89				122	111	116	120	0.76					
FR1522178992	SISYPHE	NEPTUNE	DOLMEN	93	0.98	96	92	93	-20 €	102	90	114	93	0.96	112	102	97	
FR3615045709	VICHY MN	NEPTUNE	GAILLARD	83	0.98	103	107	106	18 €	108	114	109	108	0.97	76	104	111	
FR5454641593	VOILIER MN *	PALADIN	CURJACOIS	92	0.99	114	108	115	47 €	110	111	110	111	0.98	100	103	114	

* Limited availability *** Subject to availability



EDELWEISMN X OZEUS

FR1935129507

25/08/2011

GAEC ELEVAGE MAZAUD

IFNAIS
108

CRsev
109

DMsev
122

ISEVR
124

GAGNEUR_{MN}

TO EARN MORE BEEF

- Brings a meatier rump: ribeye and top line
- promising merit for calving ease
- good slender-boned frame



NELSON X HEROS BIS

FR1932086811

23/11/2005

IFNAIS
95

CRsev
115

DSsev
118

VMAT
120

ATLAS_{MN}

ALREADY TOP PROVEN

- heavy mixed-purpose females
- wide and well-shaped rumps
- promising merit for his milk



IFNAIS
89

CRsev
122

DSsev
116

ISEVR
120



COMPIL X MANOIR, MN FR1934106236 18/01/2011

GORILLE_{MN}

MIXED-PURPOSE TYPE

- Length and good wide body figures
- well-balanced females
- wide pelvis, from hips to pin bones



IFNAIS
97

CRsev
112

DSsev
122

ISEVR
114

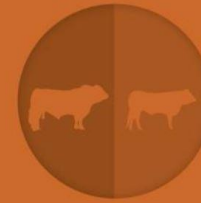


DANDY X FR1627496848 FR2311217750 06/03/2011 M JOSSE PASCAL

GABIN_{MN}

ALREADY FAMOUS!

- Mixed breedy type progeny
- Meat in the ribeye and quarter
- Good breed qualities



WHICH BULL FOR WHICH DAUGHTER ?

	For the 1st calving			For adult cows				
IONESCO	DIMOIVII	ANECDOTE	VALERIAN	FRASCATI	EDAKKYA	CHATELAIN	CAMEOS	URVILLE
LOUXOR	DAMONA	VULPIAN	USSE	FRASCATI	DAHAI	CHATELAIN	BELORIENT	ARMORIC
MASDUCLLO	FESTNOZ	DAMONA	VULPIAN	FRASCATI	BELORIENT	USSE	URVILLE	OZEUS
MESCAL	EREBOS	VULPIAN	NEOPHIN	FOLETON	EWEK	CAMEOS	VIVAVOCE	URVILLE
MOZART	DIMOIVII	ANECDOTE	OZEUS	EDAKKYA	DAY	CAMEOS	VALERIAN	LOUXOR
NEOPHIN	FESTNOZ	DAMONA	ARMORIC	FUMAROLI	EDAKKYA	CAMEOS	BEAUPRE	ELEAZAR
NEUF	ANECDOTE	VALERIAN	NEOPHIN	FUMAROLI	EWEK	DAY	DAHAI	AZURRI
OBIVAN	COMTE	PATOCLE	OZEUS	FOLETON	EWEK	DAY	CAMEOS	AZURRI
ONDIT	EREBOS	COMTE	ARMORIC	EWEK	DAY	CAMEOS	AZURRI	ARMORIC
OZEUS	GRENACHEDA	MONA	VALERIAN	FLEURAT	FRASCATI	CHATELAIN	BUSHIDO	AZURRI
PATOCLE	DIMOIVII	DAMONA	VALERIAN	ESA	EDAKKYA	UTMAJEUR	ROESTI	MOZART
REMIX	EREBOS	USSE	NEOPHIN	FUMAROLI	DAHAI	AZURRI	URVILLE	TAZIEFF
ROESTI	EREBOS	ARMORIC	USSE	FLEURAT	EDAKKYA	CAMEOS	BELORIENT	URVILLE
TASTEVIN	ANECDOTE	VALERIAN	USSE	FLEURAT	FUMAROLI	DAY	CAMEOS	AZURRI
TOIAUSSI	EREBOS	COMTE	OZEUS	DAY	CAMEOS	USSE	URVILLE	PATOCLE
USSE	DAMONA	COMTE	ARMORIC	FLEURAT	DAY	CHATELAIN	CAMEOS	UTMAJEUR
URVILLE	GRENACHE	DAMONA	ARMORIC	FRASCATI	CHATELAIN	CAMEOS	BELORIENT	AZURRI
VALERIAN	DAMONA	ARMORIC	NEOPHIN	FRASCATI	FOLETON	DAHAI	AZURRI	UTMAJEUR
VERDAD	FESTNOZ	DAMONA	NEOPHIN	FRASCATI	EDAKKYA	DAHAI	CHATELAIN	USSE
VIVAVOCE	DAMONA	ANECDOTE	VULPIAN	EDAKKYA	CAMEOS	BELORIENT	BEAUPRE	ARMORIC
UTMAJEUR	EREBOS	ANECDOTE	USSE	EDAKKYA	DAY	CAMEOS	VALERIAN	URVILLE
VULPIAN	GRENACHE	EREBOS	OZEUS	FUMAROLI	ESA	EWEK	DAY	DAHAI
ANECDOTE	DAMONA	ARMORIC	PATOCLE	FRASCATI	DAHAI	BELORIENT	AZURRI	UTMAJEUR
APEX	DIMOIVII	ANECDOTE	VALERIAN	EWEK	DAY	AZURRI	URVILLE	LOUXOR
ARMORIC	DIMOIVII	USSE	NEOPHIN	FUMAROLI	FRASCATI	DAHAI	AZURRI	MOZART
AZURRI	GRENACHE	FEST NOZ	DAMONA	FRASCATI	EDAKKYA	BELORIENT	ARMORIC	VALERIAN
BAVARDAGE	DAMONA	VALERIAN	OZEUS	FRASCATI	EDAKKYA	DAY	CAMEOS	VALERIAN
BEL-ORIENT	GRENACHE	VALERIAN	OZEUS	FUMAROLI	EWEK	DAY	DAHAI	URVILLE
CAMEOS	DIMOIVII	VALERIAN	USSE	FUMAROLI	FRASCATI	EDAKKYA	DAHAI	UTMAJEUR
CHATELAIN	EREBOS	COMTE	OZEUS	EWEK	DAY	VALERIAN	URVILLE	LOUXOR
DAY	EREBOS	DAMONA	VULPIAN	FRASCATI	EDAKKYA	BELORIENT	USSE	OZEUS
DAMONA	GRENACHE	EREBOS	PATOCLE	FUMAROLI	DAY	DAHAI	AZURRI	UTMAJEUR
DAHAI	DAMONA	VULPIAN	PATOCLE	EWEK	EDAKKYA	CAMEOS	BELORIENT	ARMORIC

YOUR PARTNER FOR :

DAIRY

BEEF

BIOTECHNOLOGIES

